


1					
1.1	S219				
1.2					
1.3					
1.4	S219		(K0+000)		
	(K4+120)	4120	24 5	3	+4x3 75
	+2x2.5	+2x0.75			
2					
2.1					
2.2					
2.3					
2.4					
	CJJ45-2015		CJJ89-2012		
	GB50054-2011		GB50052-2009		
	GB51348-2019		GB50057-2010		
	GB55002-2021		GB/T24969-2010		
	07SD101-8		GB/T24969-2010		
3					
3.1					
	1) 220/380V	2)	3)		
3.2	2	50kVA	2	K1+260	K3+240
	10kV				
	20 (				
	20				
	)				
3.3	3.5				
	5	(K0+000-K2+320)	10KV	66KV	
	K0+000-K2+320				
	K2+320-K4+120				
3.4	166				
4	220/380V				
4.1	10KV				
	10%				
4.2					
5					
5.1					

5.2	30LX		1.25W/m <sup>2</sup>		Q 4
	10	Q 5	2.0cd/m <sup>2</sup> ,		0.4
5.3	( )				12
	12	2m	35 (	1000m	
	60 )				
			4mm	31m/s	
	IP65				
5.4	LED				
	IP66				
	3500K		5	2*180WLED	
	0.9	110lm/W			
5.5	SS- CCE16GWSL				
1					
2	SS- CCE16GWSL				
	365				
6					
6.1	12D6	1			
	600mm x300mm *800mm				
	400mm		C25	1000mm x700mm	
	*400mm	12D4- P86			
	IP55	8			
7					
7.1	YJV22	1.0			
7.2	RC80				
	1.5	07SD101- 8- P43 44			
7.3	RC65				(
	3m				30m
	)				
8					
8.1	TN S	PE	PE		
	R	4			




	4	
8 2		
8 3		
8 4	12D10P23	50x5x2500
8 6		
8 7	10	
	12D10- P61	
8 8	1 P65	1 P43
9		
9 1	:	
1		
2		
3	(3C )	
9 2		
1	LED	
2		
	365	
3		
	Q 7	
10		
10 1		
10 2	(3C )	
10 3		
10 4	Q 6	
	1	CJJ89-2012
10 5		
10. 6	12D	
10 7	BG50135- 2006	GB50017- 2014

1	01		A3	
2	02		A3	
3	03		A3	
4	04		A3	
5	05		A3	
6	06	( ) ( )	A3	
7	07	( ) ( )	A3	
8	08	( ) ( )	A3	
9	09	( ) ( )	A3	
10	10	( ) ( )	A3	
11	11	( ) ( )	A3	

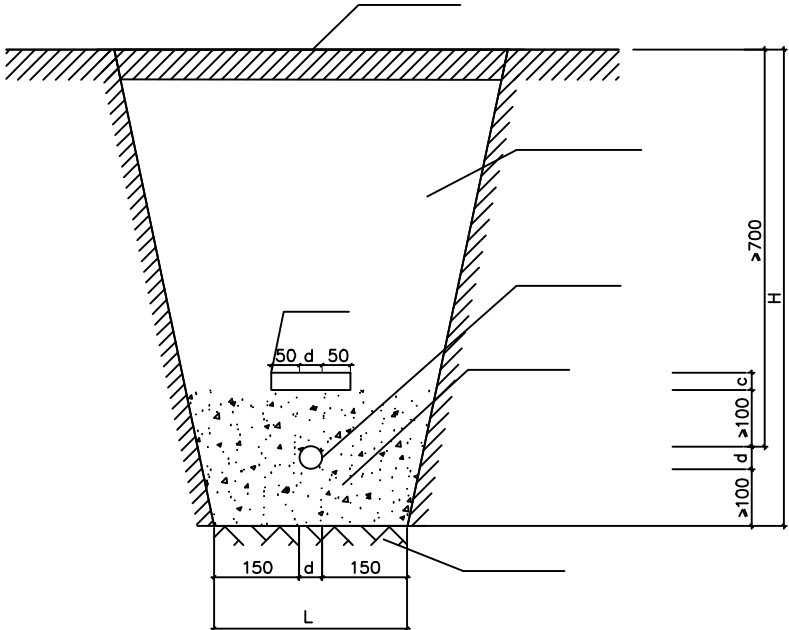
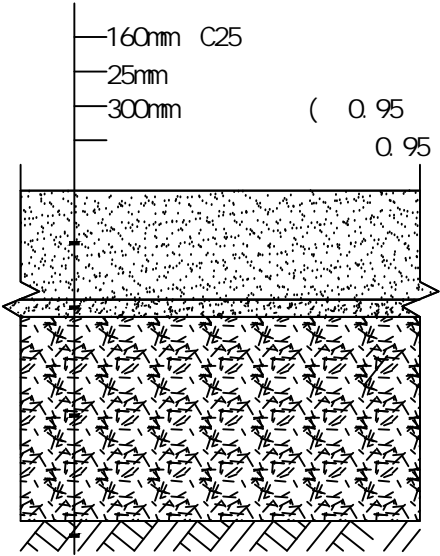
CJJ89-2012-6.2.5

		m	
	10kV	0.1	0.5
	10kV	0.25	0.5
		—	0.5
		0.5	0.5
		2.0	0.5
		1.0	0.5
		1.0	0.5
		0.5	0.5
		3.0	1.0
		3.0	1.0
		10.0	1.0
		1.5	1.0
		1.0	0.7
		1.0	—
		0.6	—
		1.0	0.5

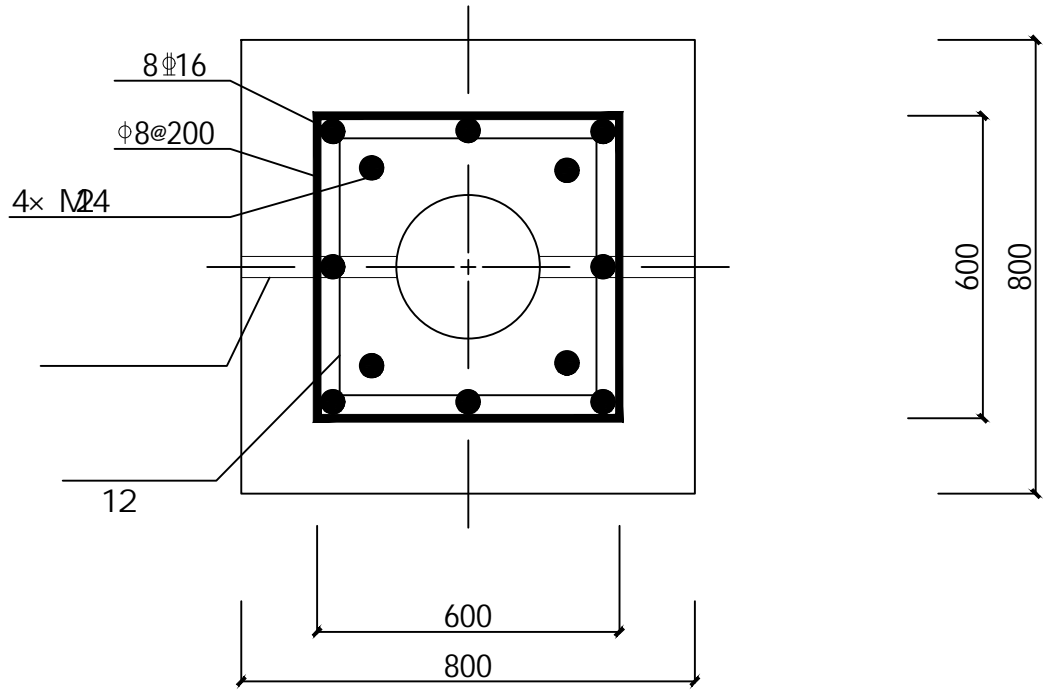
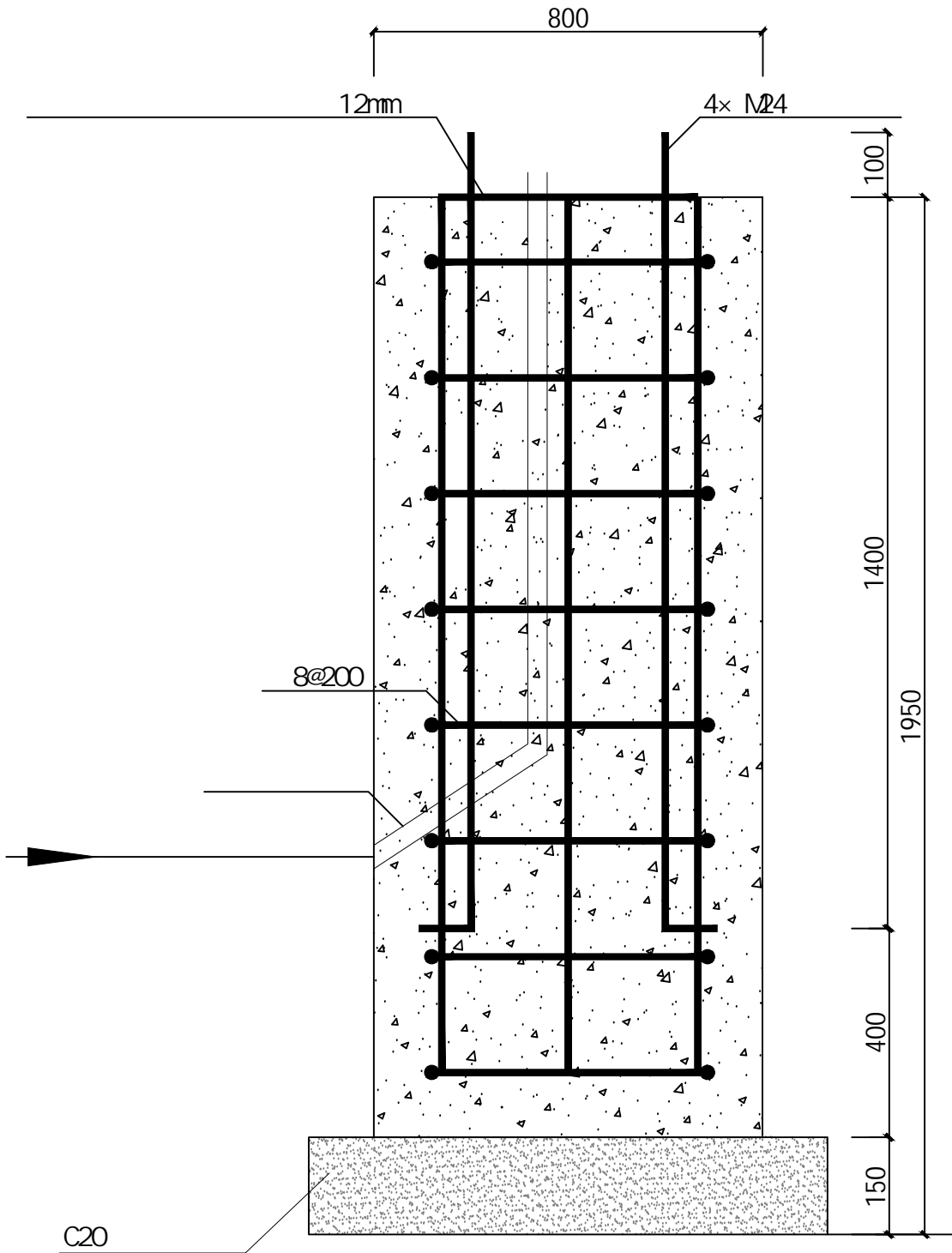

1	●		2x180WLED ( )12	166	
2	AL			2	
3	BYQ		50KVA	2	
4			8	4	
5	—		YJV22-0.6/1KV-5*25mm²	6800	
6	—		PE65( )	166*3=498	
7	—		RC65( )	210	
8	—		(RC80 )	220	
9	—		YJV22-0.6/1kV-5*25mm² ( )	40	
11	—		DN65- ( )	40	
12			BW- 2 5mm²	4700	
13	□		07SD101-8-P121 122	162	
14	□		07SD101-8-P43 44	8	

20 ( 20 )

1			410m*0.7m( * )	287	





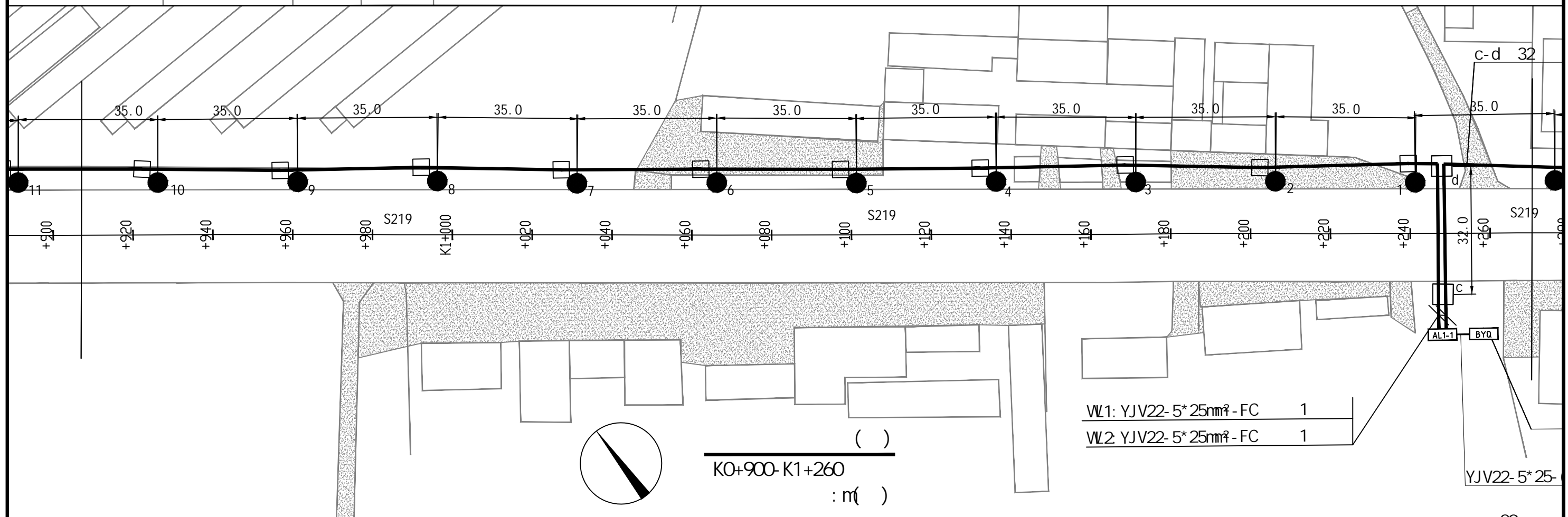
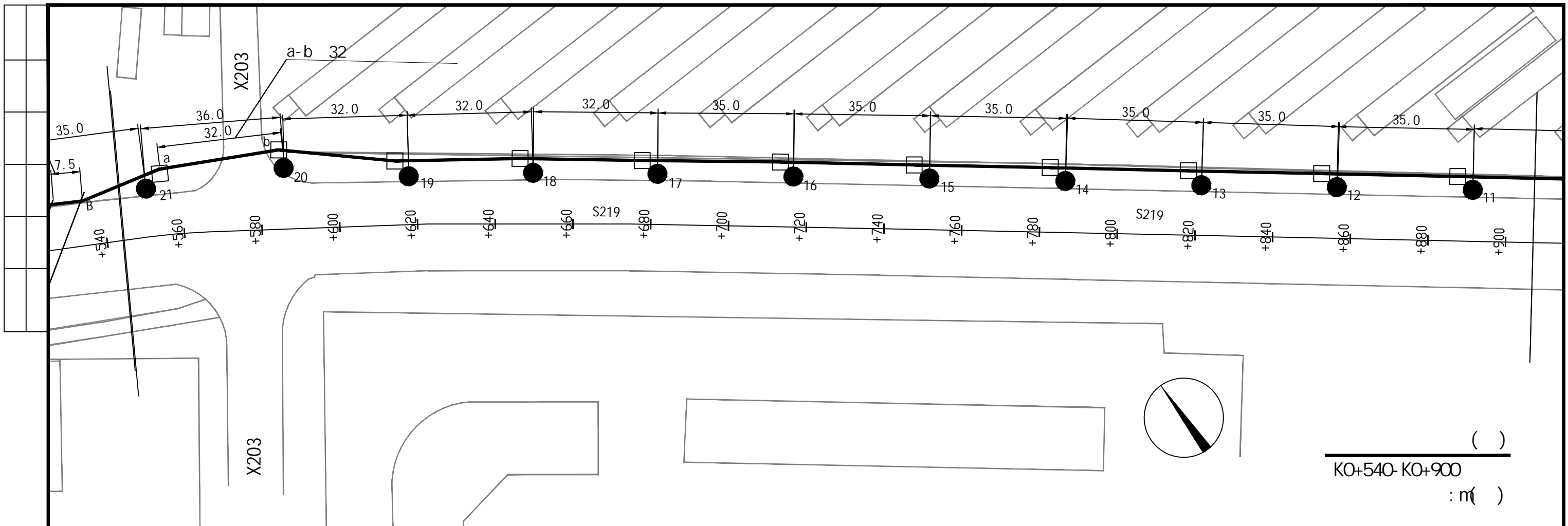
12

16D702-6 4 17

- 12
- 8
- ( )
- 24.5mm
- >10TF/ 11 <10TF/
- 150mm, 40mm, C30
- 0.1m
- Q-235
- 16D702-6 4 17
- 
- 







A215002762

S219

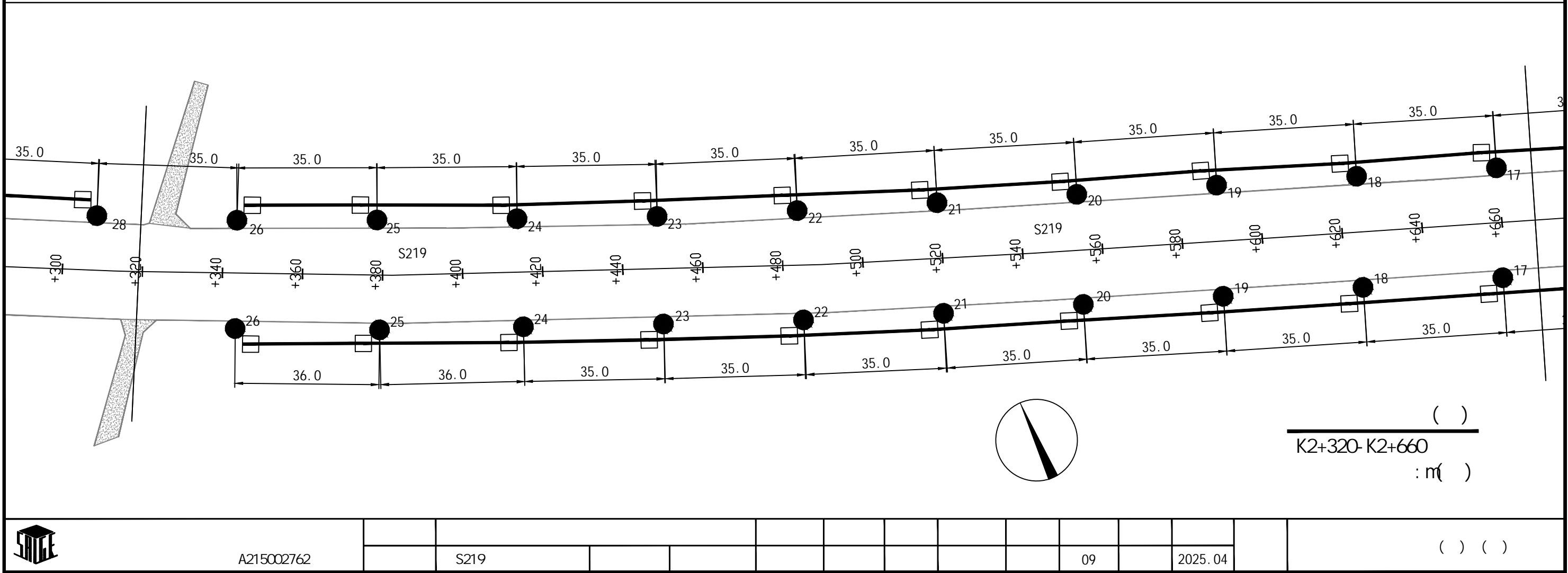
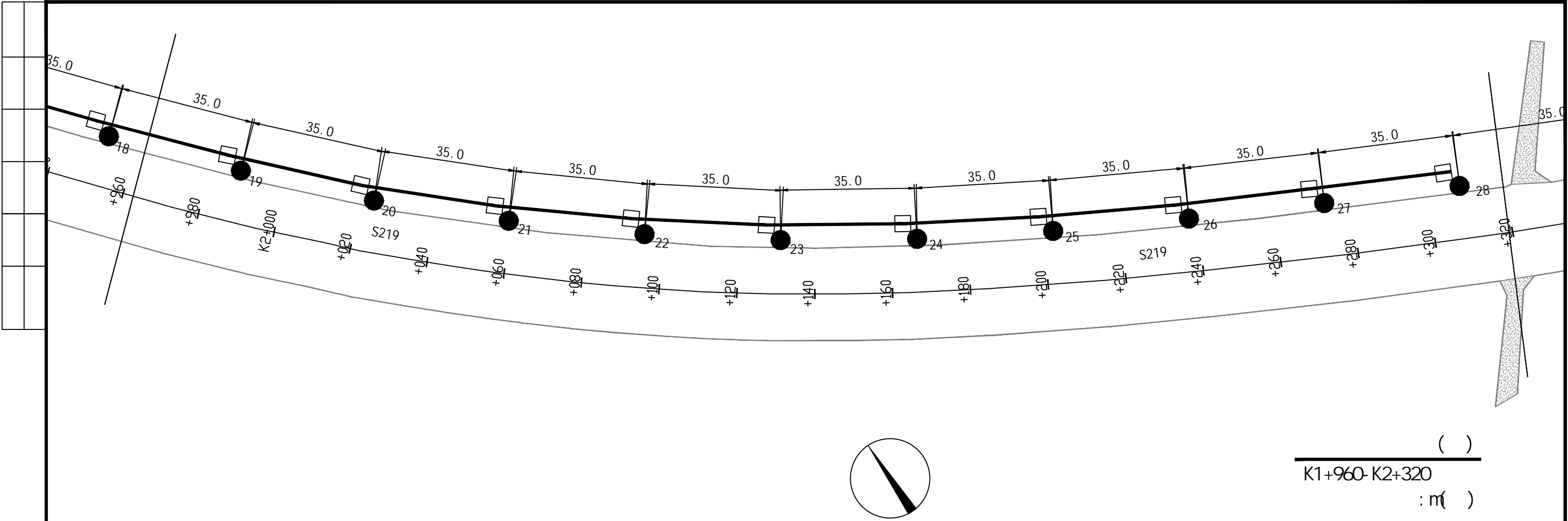
07

2025. 04

( ) ( )







A215002762

S219

09

2025.04

( ) ( )



